



ITD60 ABS model



ITD51 PVC model



TOTAL 1™
ITD365 2-in-1 ABS/PVC model

ITEM #	DESCRIPTION	BARCODE 7 75439	CTN QTY
ITD60	1pc ABS ISLAND TUB DRAIN® w/ABS Adaptor Kit and Reducing Bushing	04073 5	10
ITD51	1pc PVC ISLAND TUB DRAIN® w/PVC Adaptor Kit and Reducing Bushing	04074 2	10
ITD365	Total 1™ 2-in-1 ISLAND TUB DRAIN® w/ABS and PVC Adaptor Kit and Reducing Bushings	04075 9	10

Each kit includes

- Island Tub Drain® assembly
- Flanged Brass Tailpiece w/Nut & Washer and Lubricant. Other tailpieces are available from OS&B®
- ABS or PVC Adaptor Kit (Total 1™ model includes both). Attaches to ABS or PVC Bath Wastes
- 2" x 1-1/2" ABS or PVC (Total 1™ model includes both) Reducing Bushing
- Removable Mortar/Debris Guard
- Cutting template

To see our videos:



www.youtube.com/c/osbplumbing



Scan the QR Code

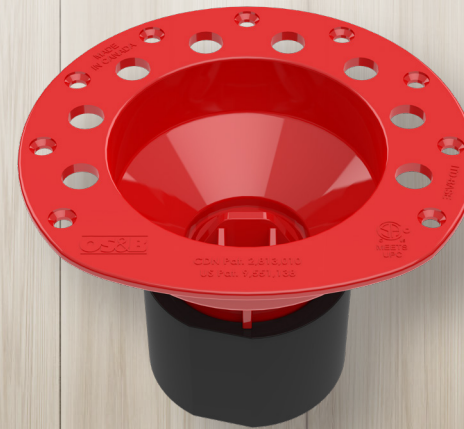
Island Tub Drain® is Patented in Canada (Patent # 2,813,010) and the United States of America (Patent # 9,551,138). ITD® and Island Tub Drain® are Registered Trademarks of Oakville Stamping and Bending Limited. The Red Drain® is a Registered Trademark of Oakville Stamping and Bending Limited. OS&B® is a Registered Trademark of Oakville Stamping and Bending Limited (OS&B®). Total1™ is a Trademark of Oakville Stamping and Bending Limited.

Redesigned.

Our original Island Tub Drain® was groundbreaking, creating a new category and setting the industry benchmark for freestanding tub drains.

Still 100% engineered and manufactured in Canada, the newest addition to our ITD® range of products resets the benchmark with it's new 1 piece design and category leading features.

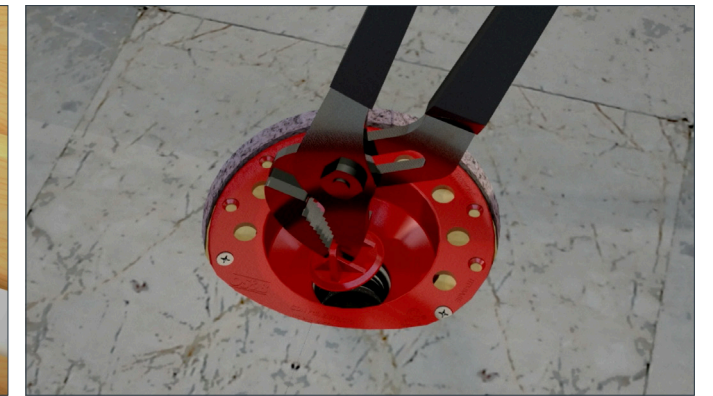
The Red Drain®



Rough-in a Freestanding Tub in advance... Install a Freestanding Tub in minutes.

When installed at rough-in, the Island Tub Drain® provides a simple connection between the P-trap and tub from above the floor - eliminating the need for access from below the fixture during tub installation. *Reduces time and simplifies installation!*

Your job just got easier®



Features/Benefits

- More compact Asymmetrical Deck Flange - makes installation in tight spaces easier
- Low profile design - allows for installation in 8" joist space or greater
- 1 piece design - ensures a secure installation
- Deeper Well design - accommodates bath drain fittings
- Built-in Snap-off Test Cap - allows for water/air/smoke testing (Rated to 30psi)
- Island Tub Drain® is a Freestanding Tub rough-in (install prior to tiling) - access below fixture not required
- Available in ABS, PVC and Total 1™ 2-in-1 ABS/PVC models - see next page

Installation Tips*

- Use 4" hole saw to cut sub floor (not included). Cutting template included
- Secure Deck Flange with screws (not included)
- Do not cut the brass Tailpiece as this may cause a leak. Other tailpieces are available from OS&B®
- Disassembling the Drain or cutting the Tailpiece will void the warranty
- *Refer to complete installation instructions supplied with product

NOTE: Island Tub Drain® IS NOT FOR USE with liquid applied or sheet membranes

NOTE: Island Tub Drain® MUST BE INSTALLED in a dry area with no potential of water contact

Smaller all Plastic Deck Flange
 Compact Asymmetrical design for easier installation in tight spaces (fits in 8" joist space or larger)

Screw holes
 Fixes flange to sub floor. Screws not included

Snap off Test Cap
 Allows for easy water/air/smoke testing

Available models:
 • ITD60: ABS model (Shown)
 • ITD51: PVC model
 • ITD365: Total 1™ 2-in-1 ABS and PVC model

2" DWV Outlet
 2" x 1-1/2" ABS or PVC Reducing Bushing supplied.

New 1 piece design
 For a secure installation. Deep Well design accommodates bath drain fittings

Certification:
 cCSAus meets UPC & IPC Code



Easy grip removable Mortar/Debris Guard included
 Sits above floor and is easy to grip and remove (actual Guard is larger than shown)

Certification*



*The "cCSAus Meets UPC & IPC Code" mark means the product conforms to the requirements of the NPC, UPC, IPC and IRC.